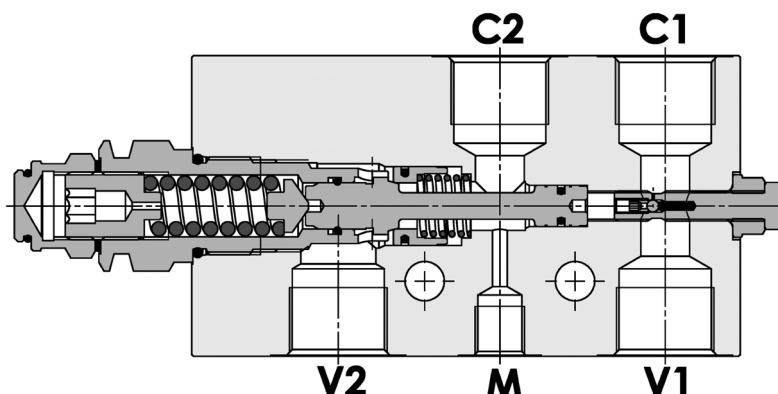
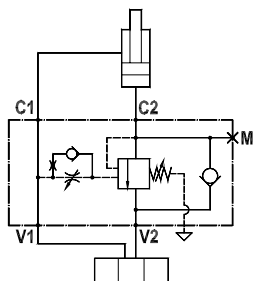


**Valvola overcenter singola bilanciata, montaggio in linea e pilotaggio interno, attacco manometro e pilotaggio regolabile**  
**Fully balanced single overcenter valve, line mounted, internal and adjustable pilot, pressure gauge port**

Rev.01-2010/02



**SPECIFICHE TECNICHE**

**Materiali:** corpo in acciaio, protetto mediante zincatura. I componenti interni sono in acciaio trattato termicamente.

**Portata:** fino a 150 l/min

**Taratura max.:** 350 bar

**Rapporto di pilotaggio:** 1 : 4 (a richiesta 1 : 8)

**Regolazione pressione:** mediante vite

**Campo di regolazione pressione:** veder pag. 02

**TECHNICAL SPECIFICATIONS**

**Materials:** body is steel made. Internal parts are in hardened steel. External surface: zinc plated.

**Rated flow:** up to 150 l/min

**Max. setting:** 350 bar

**Pilot ratio:** 1 : 4 (standard), 1 : 8 on request

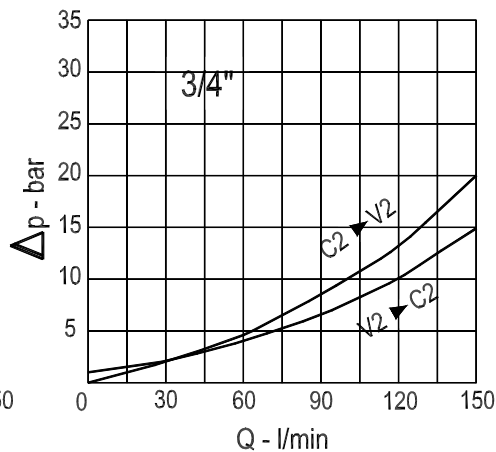
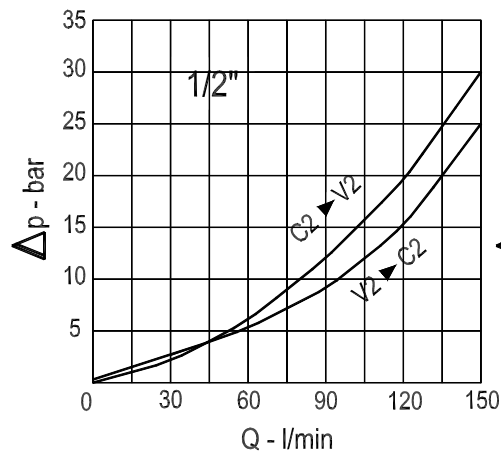
**Adjustment means:** leakproof screw adjustment

**Adjustable pressure range:** see page 02

**DIAGRAMMA PERDITE DI CARICO - PRESSURE DROP CURVES**

Viscosità olio 24 mm<sup>2</sup>/sec. (3,5 °E)  
 Temperatura 50 °C

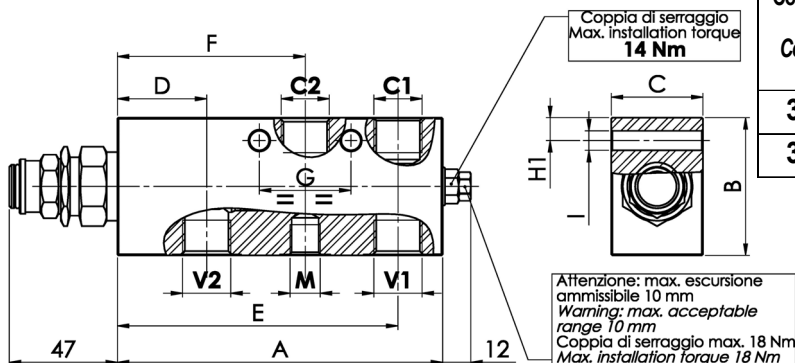
Oil viscosity 24 mm<sup>2</sup>/sec. (3,5 °E)  
 Temperature 50 °C



**Valvola overcenter singola bilanciata, montaggio in linea e pilotaggio interno, attacco manometro e pilotaggio regolabile**  
**Fully balanced single overcenter valve, line mounted, internal and adjustable pilot, pressure gauge port**

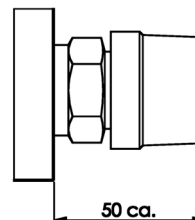
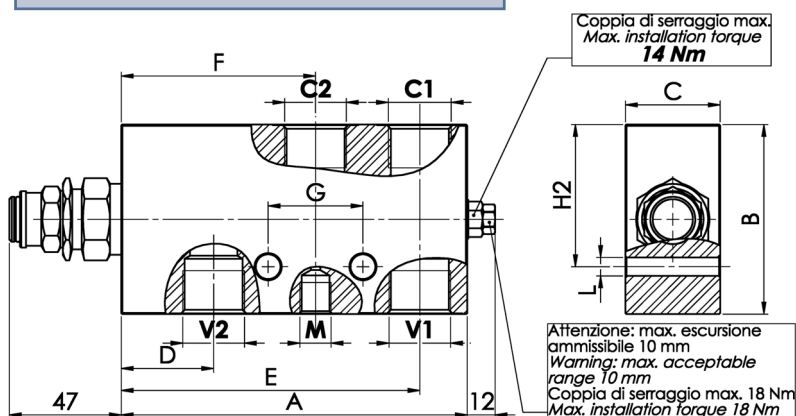
Rev.01-2010/02

**FPOB-150-S-1/2-L-P-M-35-AP**



MOLLE - SPRINGS				*
Codice Code	Rapp. pil. Pilot ratio	Campo taratura min.-max. bar Adjustable pressure range bar	Increment. press. bar/giro vite Pressure increase bar/tum	Taratura standard bar Standard setting bar
35	1 : 4	100 - 350	110	280
35	1 : 8	150 - 350	92	280

**FPOB-150-S-3/4-L-P-M-35-AP**



Cappello antimanomissione disponibile su richiesta (Z)

Tamperproof cap available on request (Z)

TIPO TYPE	V1-C1 V2-C2	M	A	B	C	D	E	F	G	H1	H2	I	L	PESO WEIGHT
	BSPP	BSPP	mm	mm	mm	mm	mm	mm	mm	mm	mm	mm	mm	Kg
FPOFB-150-S-1/2"-L-P-M-35-AP	1/2"	1/4"	142	60	40	39	122.5	82	40	10	/	8.5	/	2,450
FPOFB-150-S-3/4"-L-P-M-35-AP	3/4"	1/4"	146	80	40	39	126	82	40	/	60	/	10.5	3,170

**ESEMPIO DI ORDINAZIONE - ORDERING CODE EXAMPLE**

**F P O F B 1 5 0 S Z 1 / 2 L P M 3 5 A P B \***

\* Z: tappo antimanomissione, omettere se non richiesto  
Z: tamperproof cap, omit if not requested

1/2 - 1/2" BSPP  
\* 3/4 - 3/4" BSPP  
Connessioni - Port sizes

Rapporto di pilotaggio - Pilot ratio  
\* Omettere se standard - Omit if standard  
B = 1 : 8

\* Guarnizioni - Seals: V=Viton  
Omettere se BUNA-N - Omit if BUNA-N